

OFA Registry Summary by Report Year

BEARDED COLLIE

	<i>Dysplastic rank, all breeds with more than 100 cases</i>	<i>Normals</i>	<i>Equival or Carrier</i>	<i>Abnormal</i>	
HIPS	215 of 266	4137 93.58%	22 0.50%	262 5.93%	CHIC requirement
ELBOW	126 of 159	568 97.76%	1 0.17%	12 2.07%	NOT CHIC requirement
CARDIAC		42 95.45%	0	2 4.55%	
THYROID		403 89.16%	41 9.07%	8 1.77%	CHIC requirement
SHOULDER		1 100.00%	0	0	
CERF		1167 100.00%	0	0	CHIC requirement
PATELLA		12 100.00%	0	0	

Comparison of Excellent and Dysplastic percentages with dogs born 2000-2005

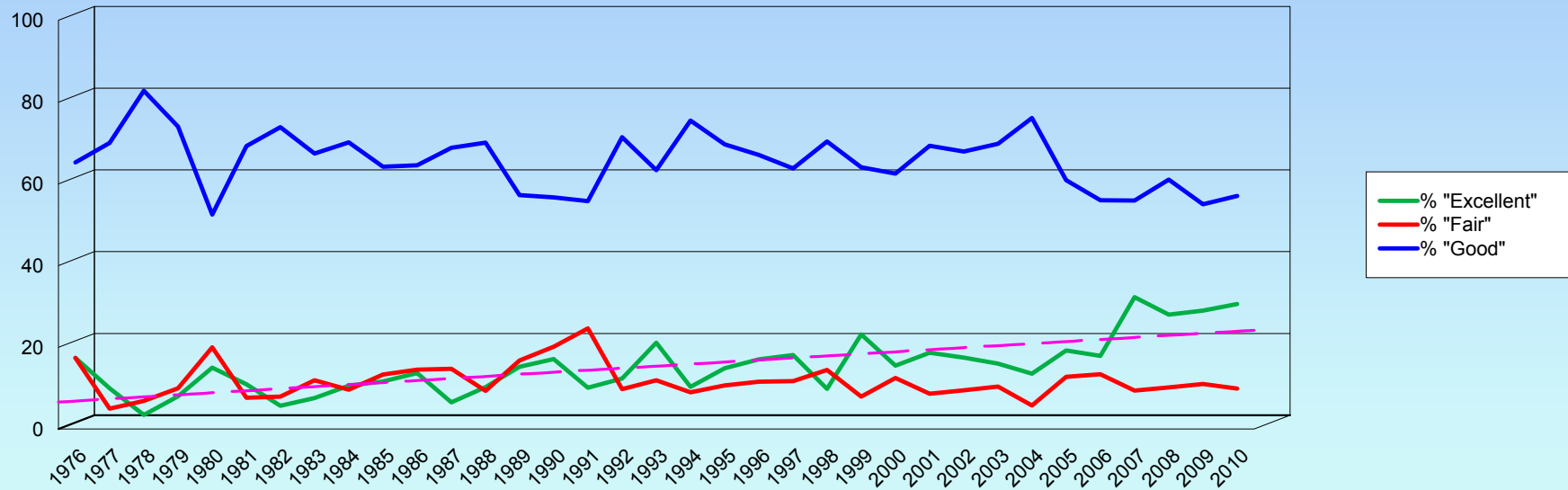
	Dogs born through 1980	Born 1990-1995	Born 2000-2005	Difference in % Excellent or Dysplastic between generations	Ranking, increase EX and decrease Dys
Total Cases	424	844	651		
EX	9.67%	16.47%	22.73%	13.06	9
Dys	8.73%	3.32%	3.38%	-5.35	29

OFA Registry Summary by Report Year

BEARDED COLLIE

Distribution of normal hip readings by report year

Trend of "Excellent"



OFA Registry Summary by Report Year

BEARDED COLLIE

Percentage of cases where owners have chosen to make all results public after 2001

Clicking these labels will link to the OFA website detail for that data

	Year	Cases	Normal	Abnormal	Excellent	Good	Fair	Borderline	Mild	Moderate	Severe
Hips	1974	3	3			2 66.7	1 33.3				
	1975	11	11		1 9.1	8 72.7	2 18.2				
	1976	23	23		4 17.4	15 65.2	4 17.4				
	1977	20	17	3 15.0	2 10.0	14 70.0	1 5.0			2 10.0	1 5.0
	1978	29	27	2 6.9	1 3.5	24 82.8	2 6.9			1 3.5	1 3.5
	1979	50	46	4 8.0	4 8.0	37 74.0	5 10.0		2 4.0	1 2.0	1 2.0
	1980	40	35	5 12.5	6 15.0	21 52.5	8 20.0		1 2.5	4 10.0	
	1981	91	80	10 11.0	10 11.0	63 69.2	7 7.7	1 1.1	3 3.3	3 3.3	4 4.4
	1982	88	77	11 12.5	5 5.7	65 73.9	7 8.0		6 6.8	3 3.4	2 2.3
	1983	92	80	12 13.0	7 7.6	62 67.4	11 12.0		5 5.4	2 2.2	5 5.4
	1984	104	94	9 8.7	11 10.6	73 70.2	10 9.6	1 1.0	4 3.9	4 3.9	1 1.0
	1985	120	107	12 10.0	14 11.7	77 64.2	16 13.3	1 0.8	6 5.0	2 1.7	4 3.3
	1986	124	115	8 6.5	17 13.7	80 64.5	18 14.5	1 0.8	3 2.4	4 3.2	1 0.8
	1987	122	110	12 9.8	8 6.6	84 68.9	18 14.8		4 3.3	8 6.6	
	1988	107	96	9 8.4	11 10.3	75 70.1	10 9.4	2 1.9	4 3.7	3 2.8	2 1.9
	1989	131	117	13 9.9	20 15.3	75 57.3	22 16.8	1 0.8	5 3.8	8 6.1	

OFA Registry Summary by Report Year

BEARDED COLLIE

Percentage of cases where owners have chosen to make all results public after 2001

Clicking these labels will link to the OFA website detail for that data

	Year	Cases	Normal	Abnormal	Excellent	Good	Fair	Borderline	Mild	Moderate	Severe
Hips	1990	134	126	6	23	76	27	2	3	2	1
				4.5	17.2	56.7	20.2	1.5	2.2	1.5	0.8
	1991	138	125	11	14	77	34	2	6	5	
				8.0	10.1	55.8	24.6	1.5	4.4	3.6	
	1992	154	144	9	19	110	15	1	5	3	1
				5.8	12.3	71.4	9.7	0.7	3.3	2.0	0.7
	1993	142	137	4	30	90	17	1	2	2	
				2.8	21.1	63.4	12.0	0.7	1.4	1.4	
	1994	155	147	7	16	117	14	1	4	3	
				4.5	10.3	75.5	9.0	0.7	2.6	1.9	
	1995	168	160	5	25	117	18	3	3	1	1
				3.0	14.9	69.6	10.7	1.8	1.8	0.6	0.6
	1996	164	157	7	28	110	19		5	1	1
				4.3	17.1	67.1	11.6		3.1	0.6	0.6
1997	221	207	12	40	141	26	2	7	5		
			5.4	18.1	63.8	11.8	0.9	3.2	2.3		
1998	152	144	7	15	107	22	1	5	2		
			4.6	9.9	70.4	14.5	0.7	3.3	1.3		
1999	164	156	8	38	105	13		5	3		
			4.9	23.2	64.0	7.9		3.1	1.8		
2000	200	181	18	31	125	25	1	9	8	1	
	0.5		9.0	15.5	62.5	12.5	0.5	4.5	4.0	0.5	
2001	150	145	4	28	104	13	1	3	1		
	10.0		2.7	18.7	69.3	8.7	0.7	2.0	0.7		
2002	137	130	4	24	93	13	3	3	1		
	18.2		2.9	17.5	67.9	9.5	2.2	2.2	0.7		
2003	106	102	3	17	74	11	1	3			
	9.4		2.8	16.0	69.8	10.4	0.9	2.8			
2004	155	148	6	21	118	9	1	4	1	1	
	18.1		3.9	13.6	76.1	5.8	0.7	2.6	0.7	0.7	
2005	156	145	6	30	95	20	5	4	2		
	16.7		3.9	19.2	60.9	12.8	3.2	2.6	1.3		

OFA Registry Summary by Report Year

BEARDED COLLIE

Percentage of cases where owners have chosen to make all results public after 2001

Clicking these labels will link to the OFA website detail for that data

	Year	Cases	Normal	Abnormal	Excellent	Good	Fair	Borderline	Mild	Moderate	Severe
Hips	2006	134 18.7	117	16 11.9	24 17.9	75 56.0	18 13.4	1 0.8	14 10.5	2 1.5	
	2007	127 22.8	124	3 2.4	41 32.3	71 55.9	12 9.5		3 2.4		
	2008	118 16.1	117	1 0.9	33 28.0	72 61.0	12 10.2		1 0.9		
	2009	100 20.0	95	5 5.0	29 29.0	55 55.0	11 11.0		5 5.0		
	2010	121 13.2	118	3 2.5	37 30.6	69 57.0	12 9.9		1 0.8	2 1.7	
	2011	105 14.3	96	9 8.6	27 25.7	62 59.1	7 6.7		8 7.6	1 1.0	
Totals		4356	4059	264 6.1	711 16.3	2838 65.2	510 11.7	33 0.8	146 3.4	90 2.1	28 0.6

OFA Registry Summary by Report Year

BEARDED COLLIE

Elbows

YEAR	All Cases	Normal	Abnormal	Borderline	Grade 1 dysplasia	Grade 2	Grade 3
1990	1	1					
		100.0					
1991	2	2					
		100.0					
1992	3	3					
		100.0					
1993	2	2					
		100.0					
1994	3	3					
		100.0					
1995	7	7					
		100.0					
1996	1	1					
		100.0					
1997	8	8					
		100.0					
1998	10	10					
		100.0					
1999	15	14		1			
		93.3		6.7			
2000	25	25					
		100.0					
2001	25	25					
		100.0					
2002	27	26	1		1		
		96.3	3.7		100.0		
2003	15	13	2		1	1	
		86.7	13.3		50.0	50.0	
2004	36	36					
		100.0					
2005	62	61	1		1		
		98.4	1.6		100.0		
2006	61	59	2		2		
		96.7	3.3		100.0		
2007	56	54	2		2		
		96.4	3.6		100.0		
2008	54	51	3		3		
		94.4	5.6		100.0		
2009	40	39	1		1		
		97.5	2.5		100.0		
2010	59	57	2			1	1
		96.6	3.4			50.0	50.0

OFA Registry Summary by Report Year

BEARDED COLLIE

2011	56	55		1				
		98.2		1.8				
Totals	568	552	14	2	11	2	1	
		97.2	2.5	0.4	78.6	14.3	7.1	

OFA Registry Summary by Report Year

BEARDED COLLIE

Cardiac

Year	All cases	Normal	Abnormal	Equivocal
1997	1	1 100.0		
1999	2	2 100.0		
2001	2	2 100.0		
2002	1	1 100.0		
2004	6	6 100.0		
2005	1	1 100.0		
2006	1	1 100.0		
2007	1	1 100.0		
2009	15	11 73.3	3 20.0	1 6.7
2010	9	7 77.8		2 22.2
2011	9	9 100.0		
Totals	48	42 87.5	3 6.3	3 6.3

OFA Registry Summary by Report Year

BEARDED COLLIE

Thyroid

Year	All Cases	Normal	Abnormal	Autoimmune thyroiditis	Idiopathic Hypothyroidism	Equivocal
1996	3	1				2
		33.3				66.7
1997	5	3	1	1		1
		60.0	20.0	20.0		20.0
1998	11	7	1	1		3
		63.6	9.1	9.1		27.3
1999	8	7				1
		87.5				12.5
2000	11	8				3
		72.7				27.3
2001	22	19	1	1		2
		86.4	4.6	4.6		9.1
2002	18	10	2		2	6
		55.6	11.1		11.1	33.3
2003	31	28				3
		90.3				9.7
2004	24	21				3
		87.5				12.5
2005	54	45	3	2	1	6
		83.3	5.6	3.7	1.9	11.1
2006	57	52				5
		91.2				8.8
2007	54	44				10
		81.5				18.5
2008	35	32				3
		91.4				8.6
2009	47	42	1		1	4
		89.4	2.1		2.1	8.5
2010	68	60	1	1		7
		88.2	1.5	1.5		10.3

OFA Registry Summary by Report Year

BEARDED COLLIE

2011	89	81	2	1	1	6
		91.0	2.3	1.1	1.1	6.7
Totals	537	460	12	7	5	65
		85.7	2.2	1.3	0.9	12.1

OFA Registry Summary by Report Year

BEARDED COLLIE

Patella

Year	All Cases	Normal	Abnormal
1999	1	1	
2004	1	100.0	1
2005	3	100.0	3
2006	1	100.0	1
2009	2	100.0	2
2010	2	100.0	2
2011	2	100.0	2
Totals	12	12	100.0

OFA Registry Summary by Report Year

BEARDED COLLIE

Spine

	All Cases	Normal	Abnormal
1993	1		1 100.0
1994	1		1 100.0
1995	1		1 100.0
1997	4		4 100.0
1999	6		6 100.0
2000	4		4 100.0
2001	1		1 100.0
Totals	18		18 100.0